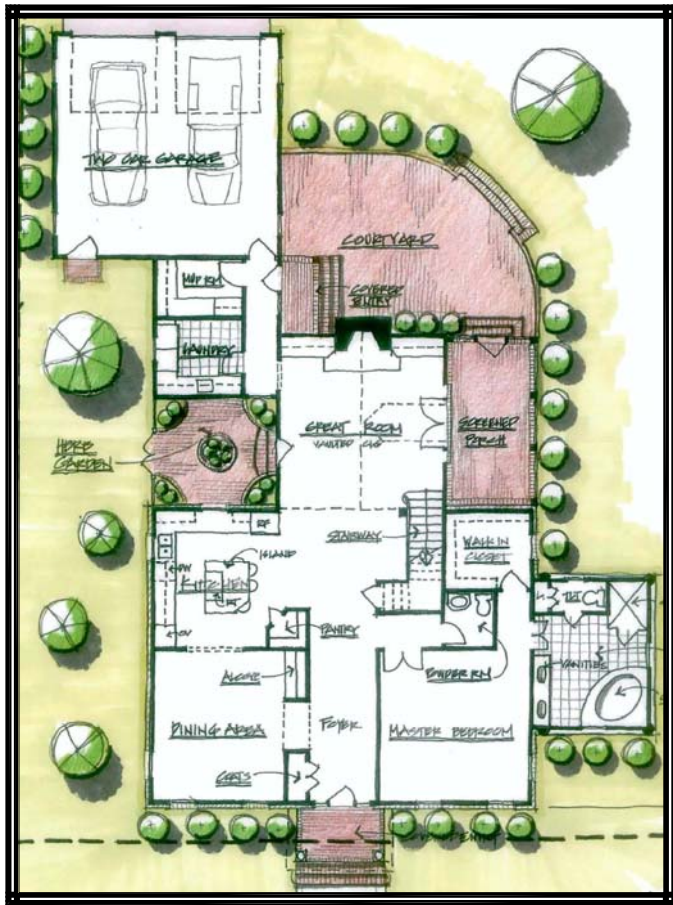
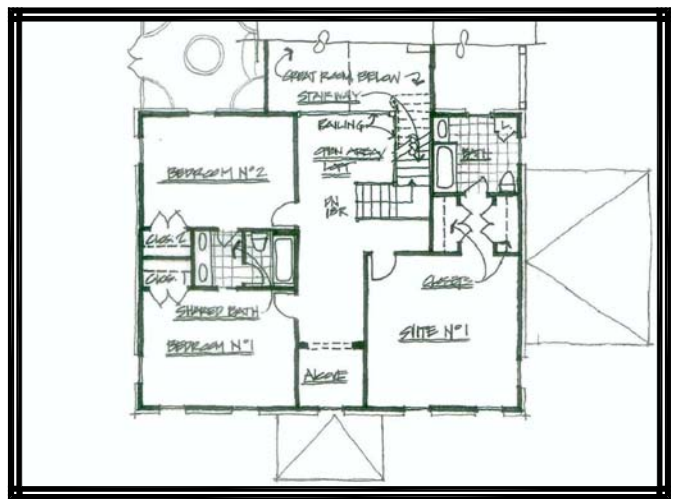
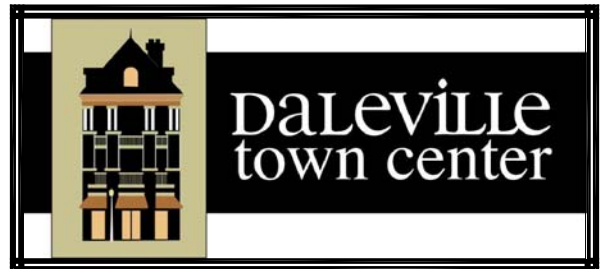


"GRAYLIN MANOR"
"COLONIAL STYLE"

MASTER BEDROOM	16'-0" x 15'-7"
MASTER BATH	11'-11" x 15'-0"
DINING ROOM	13'-7" x 15'-7"
KITCHEN	11'-5" x 14'-7"
GREAT ROOM	16'-4" x 17'-6"
SCREENED PORCH	9'-9" x 18'-0"
GARAGE	23'-0" x 23'-0"
SUITE #1	16'-0" x 16'-4"
BEDROOM #1	15'-11" x 12'-8"
BEDROOM #2	15'-11" x 11'-7"
SHARED BATH	10'-0" x 5'-8"
UNFIN. 3rd FLOOR	36'-6" x 14'-0"



FIRST FLOOR PLAN



SECOND FLOOR PLAN

1st. FLOOR:	1956 SQ. FT.
2nd. FLOOR:	1252 SQ. FT.
OUTDOOR:	175 SQ. FT.
LIVING TOTAL:	3383 SQ. FT.
GARAGE:	572 SQ. FT.
UNFIN. ATTIC:	695 SQ. FT.

• PLANS AND ELEVATIONS SHOWN ARE A GRAPHIC INTERPRETATION AND ARE SUBJECT TO CHANGE WITHOUT NOTICE.

• CONSULT BUILDERS PLANS FOR ACTUAL CONSTRUCTION DETAILS AND SIZES.



WALDRON HOMES
90 TOWN CENTER STREET, SUITE 200
DALEVILLE, VIRGINIA 24083
WWW.DALEVILLETOWNCENTER.COM TELEPHONE 540-266-3722